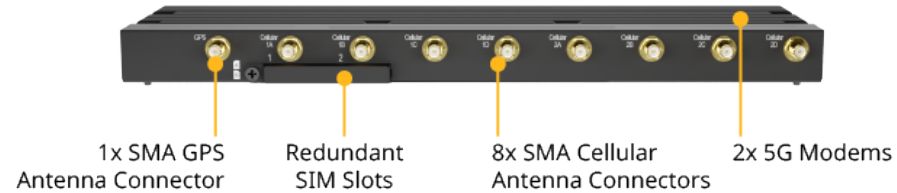
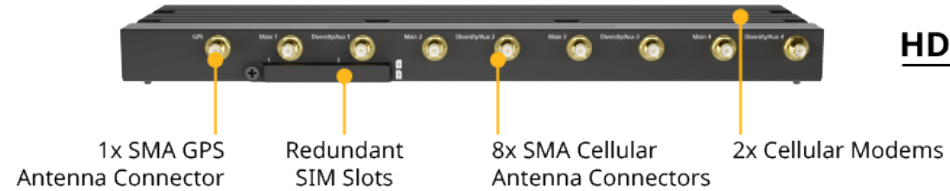


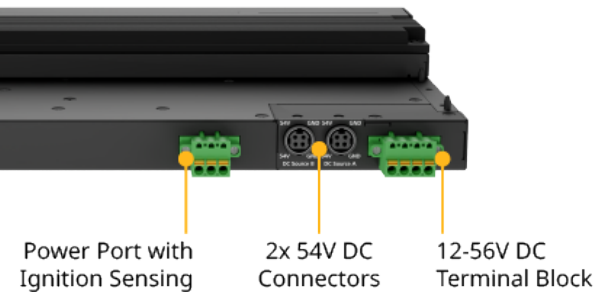
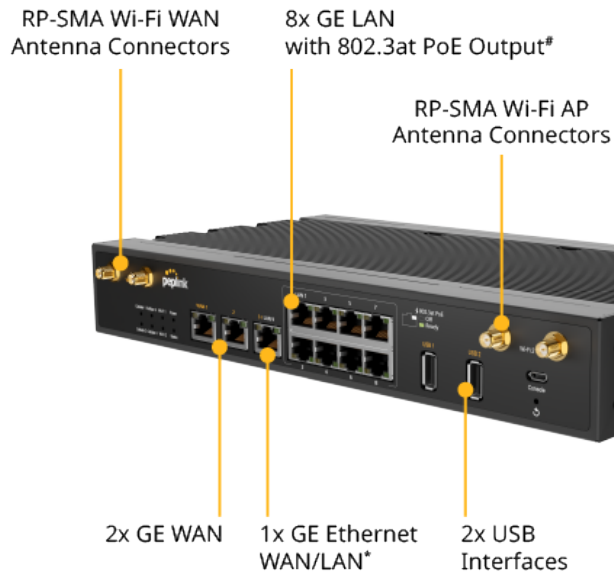
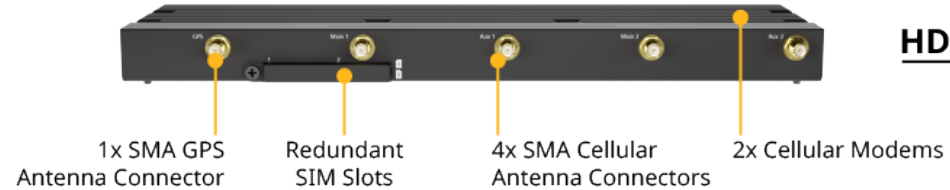
## HD2 MBX 5G



## HD2 MBX (CAT-20)



## HD2 MBX (CAT-12)



<sup>\*</sup>WAN 3 is configured as a LAN port by default. Configuration is changeable on the Web Admin.

<sup>#</sup>To use 8x LAN ports for 802.3at PoE, 2x 54V DC inputs are required. 1x 54V DC input will result in 4x LAN ports as 802.3at PoE being activated.