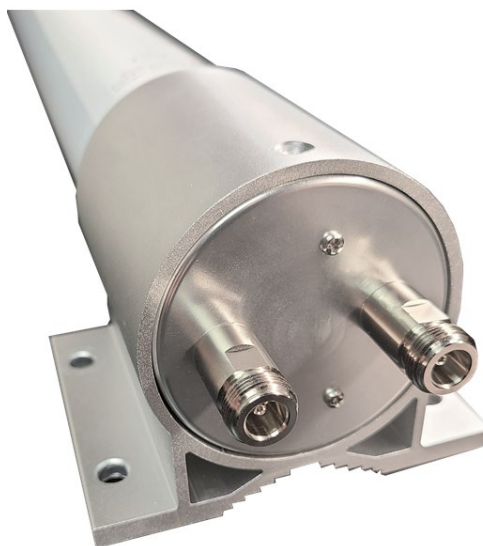


AG39 MIMO 2 x Cellular 4G LTE CBRS 5G NR Omni Directional Antenna w/Bracket Mount  
Wide-Band MIMO 2 x Cellular 3G 4G LTE CBRS 5G NR / WiFi 6 2.4GHz 5GHz~6GHz

|  |   |
|--|---|
| Multi-Carrier / Multi-Technology<br>4G LTE CBRS 5G NR Compliant      | Verizon 4G 5G (DSS) Bands: B2 B4 B5 B13 B46 B48 B66<br>T-Mobile 4G 5G Bands: B2 B4 B5 B12 B25 B26 B41 B66 B71 n25 n41 n66 n71<br>AT&T 4G 5G Bands: B2 B4 B5 B12 B14 B17 B29 B30 B66 n5<br>CBRS Band: B48<br>Additional Bands: n77 n78 n79 (5G NR) |
| 4G 5G NR Frequency Range<br>WiFi Frequency Range                     | 617-960MHz / 1710-6000MHz<br>2.4-2.5GHz   |
| 4G 5G NR Avg Peak Gain: Isotropic<br>WiFi 6 Avg Peak Gain: Isotropic | (7dBi) 617-960MHz / (9dBi) 1710-6000MHz / (9dBi) CBRS 3550-3700MHz<br>(10dBi) 2.5GHz / (9dBi) 5GHz~6GHz   |
| Horizontal Half<br>Power Beamwidth                                   | 360° / 360°   |
| Vertical Half<br>Power Beamwidth                                     | 40° / 25°   |
| VSWR   | ≤2.0 / ≤2.0   |
| Impedance  | 50 Ohms   |
| Polarization   | MIMO 2 x Vertical Omni Directional  |
| Max. Power   | 50W   |
| Dimensions   | Height: 35" / 890mm - Diameter: 3" / 78mm   |
| Radome   | High Impact Polycarbonate   |
| Operating Temperature  | -40° to 158° (°F)   |
| Wind Velocity  | 140 MPH   |
| Ingress Protection   | IP67  |
| Mounting Mast Diameter   | 2"~3.5" / 50mm~90mm   |
| Net Weight   | 3.75bs / 1.7kg<br><i>Includes mounting hardware</i>   |
| Connector Type   | 2 x N Female<br><i>Coax Cables Sold Separately</i>  |
| Mount Type   | Includes Mounting Hardware<br>Bracket Mount + 2 x U-Bolt Sets   |

78mm  
3"



2 x N Female

Aluminum Bracket Mount

890mm  
35"

Includes  
Bracket Mount  
2 x U-Bolt Sets

