

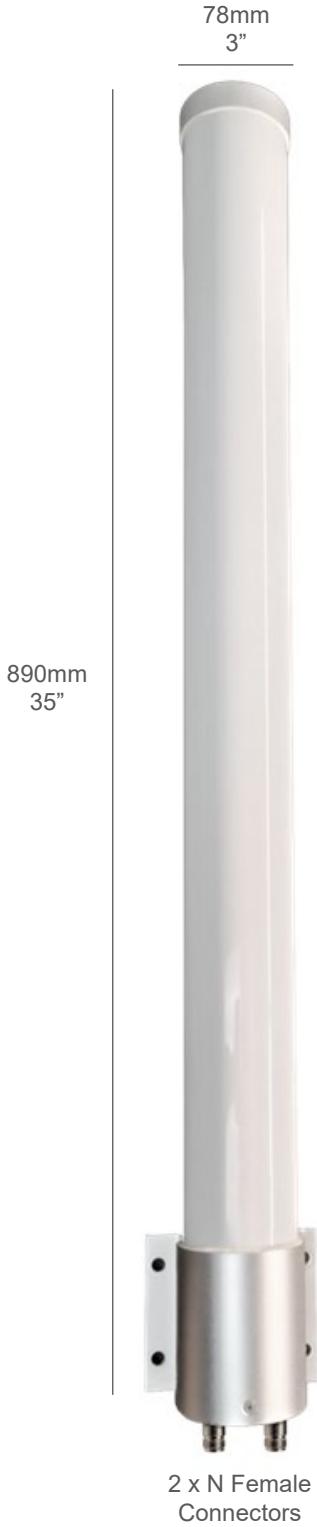
AG39-2NF Omni MIMO Series M2M IoT Antenna Specifications - 2 x NF
MIMO 2 x 4G LTE CBRS 5G NR / MIMO 2 x WiFi HaLow (902~928Mhz)
Includes Mounting Hardware

4G LTE CBRS 5G NR Frequency Range	617-960MHz / 1710-6000MHz
4G CBRS 5G NR Avg Peak Gain Isotropic WiFi HaLow Avg Peak Gain Isotropic	(7dBi) 617-960MHz / (9dBi) 1710-3800MHz / (9dBi) 4900-6000MHz / (9dBi) CBRS 3.5GHz (8dBi) WiFi HaLow 902~928Mhz
Typical Efficiency 4G 5G Elements	617-960MHz >50% 1710-3800MHz >50% 4900-6000MHz >55%
Typical Efficiency WiFi HaLow Elements	>50%
Isolation 4G 5G Elements Isolation WiFi HaLow	>10dB >12dB
Correlation Co-efficient 4G 5G Elements Correlation Co-efficient WiFi HaLow Elements	<0.2 <0.1
Horizontal Half Power Beamwidth	360° / 360°
Vertical Half Power Beamwidth	40° / 25°
VSWR	≤2.0 / ≤2.0
Nominal Impedance	50Ω
Polarization	MIMO 2 x Vertical Omni Directional
Max. Power	50W
Mechanical / Environmental Specifications	
Application	Outside
Radome	High Impact Polycarbonate Height: 35" / 890mm - Diameter: 3" / 78mm
Connector Types	2 x N Female
Coax Cables	Sold Separately Standard and Custom Cable Length Options are Available All Standard Connector Ends Available (Including FAKRA Connector Ends)
Mounting Hardware (Stainless Steel)	Includes Mounting Hardware Bracket Mount + 2 x U-Bolt Sets
Mounting Mast Diameter	2"~3.5" / 50mm~90mm
Ingress Protection	IP69K
Wind Velocity	140 MPH
Operating Temp (°F)	-40° / +158° (°F)
Weight	3.75lb / 1.7kg



Supported Cellular Service Provider Networks	
Verizon	Verizon 4G LTE 5G NR Bands 4G LTE: B2 B4 B5 B13 B46 B48 B66 (CBRS B48) 5G NR: N2 N5 N66 N77 Carriers (MVNOs) using Verizon Network: <i>Reach Mobile, Red Pocket Mobile, Spectrum Mobile, Ting Total, Tracfone, Twigby, US Mobile, Visible, Xfinity Mobile</i>
T-Mobile	Mobile 4G LTE 5G NR Bands 4G LTE: B2 B4 B5 B12 B25 B26 B41 B48 B66 B71 (CBRS B48) 5G NR: N25 N41 N66 N71 Carriers (MVNOs) using T-Mobile Network <i>Mint Mobile, TextNow, Lyca Mobile, Metro, Red Pocket Mobile Republic Wireless, Simple Mobile, Ting, Tracfone, US Mobile</i>
AT&T	AT&T 4G LTE 5G NR Bands 4G LTE: B2 B4 B5 B12 B14 B17 B29 B30 B48 B66 (CBRS B48) GSM: 1900MHz 5G NR: N2 N5 N66 N77 Carriers (MVNOs) using AT&T Network <i>Cricket Wireless, Net 10 Wireless, Red Pocket Mobile, Straight Talk</i>
Supported Cellular Bands	
5G NR Bands	n1 n2 n3 n5 n7 n8 n12 n13 n14 n18 n20 n25 n26 n28 n29 n30 n38 n40 n41 n48-CBRS n66 n71 n75 n76 n77 n78 n79 C-band
4G LTE Bands	B1 B2 B3 B4 B5 B7 B8 B12 B13 B14-FirstNet B17 B18 B19 B20 B25 B26 B28 B29 B30 B32 B38 B39 B40 B41 B42 B43 B46-LAA B48-CBRS B66 B71
3G Bands	B1 B2 B3 B4 B5 B6 B8 B9 B19
Supported WiFi IEEE Standards	
WiFi 1-6	WiFi 1 WIF 2 (802.11ba) WiFi 3 (802.11g) WiFi 4 (802.11n) WiFi 5 (802.11ac) WiiFi 6 6E (802.11ax)
* WiFi HaLow	WiFi HaLow (802.11ah) * Contact Us For AG39 HaLow WiFi Configuration Options

AG39-2NF Omni MIMO Series Antenna
 Dimensions / Mounting Bracket



SKU: AG39-2NF



Mounting Pole
Not Included



2 x N Female
Connectors

Stainless Steel Mounting Bracket

Includes
Mounting Bracket
2 x U-Bolt Sets

