

**AG-DP2C XPOL Series Cross Polarized Directional MIMO 2 x Cellular Antenna**  
*Multi-Network Directional MIMO 2 x Cellular 4G LTE 5G NR / WiFi 2.4GHz*  
*Private Networks: Anterix / CBRS / LoRaWAN / WiFi HaLow*  
*Compatible with Smart Router Antenna Technology*  
*Includes: Tilt-Bracket Mount Hardware / 1ft Coax Cables – NF*  
*(Extension Coax Cables / Surge Protection Sold Separately)*

Frequency Range: 4G LTE 5G NR Anterix / LoRaWAN / WiFi HaLow / CBRS Frequency Range: WiFi	617-960MHz / 1690-2700MHz / 3300-3800Hz 896~940MHz / 902~928MHz / 3550-3700MHz 2.4GHz
Avg Isotropic Peak Gain: 4G LTE 5G NR : Anterix LoRaWAN WiFi HaLow CBRS Avg Isotropic Peak Gain: WiFi 2.4GHz	7dBi / 7.5dBi / 8dBi 7dBi / 7dBi / 8dBi 7dBi
Horizontal Half-Power Beamwidth (°)	70° / 65° / 60°
Vertical Half-Power Beamwidth (°)	65° / 60° / 55°
Dual Polarization (XPOL) Radiation Pattern	MIMO Vertical / Horizontal (±45°) Directional
Isolation (dB)	≥20dB
Front to Back Ratio (dB)	≥15dB / ≥15dB / ≥20dB
VSWR	≤2.0 / ≤2.0 / ≤2.0
PIM 3rd Order (dBc) 2×43dBm	≤-150 / ≤-150 / ≤-150
Nominal Impedance	50Ω
Max. Power	50W
<b>Mechanical / Environmental Specifications</b>	
Application	Outside / Inside
Radome	UV Resistant ABS
Dimensions	Height: 12.6" / 320mm Width: 8.26" / 210mm Depth 3.0" / 75mm
Coax Cables	1ft AGA200 Coax Cables – N Female (2-Lead / 4-Lead) Extension Cables / Jumper Pigtail Cables Sold Separately All Standard Connector Ends Available (Including SMA / QMA / FAKRA / TNC / N)
Connector Types	N Female
Mounting Hardware (Stainless Steel)	Includes Tilt-Bracket Mount Hardware w/ 2 x U-Bolt Sets
Mounting Mast Diameter	1.5"~2.0" / 38mm~51mm
Ingress Protection / Humidity	IP67 / 5%~95%
Wind Velocity	134 mph / 60 m/s
Operating Temp (°F)	-40° / +158° (°F)
Weight	3.3lbs / 1.5kg Includes Mounting Hardware

Supported Cellular Service Provider Networks	
Verizon <i>Including MVNO's</i>	Verizon 4G LTE 5G NR Bands 4G LTE: B2 B4 B5 B13 B46 B48 B66 5G NR: N2 N5 N13 N66 N77
T-Mobile <i>Including MVNO's</i>	Mobile 4G LTE 5G NR Bands 4G LTE: B2 B4 B5 B12 B41 B66 B71 5G NR: N2 N25 N41 N71
AT&T <i>Including MVNO's</i>	AT&T 4G LTE 5G NR Bands 4G LTE: B2 B4 B5 B12 B14 B17 B29 B30 B48 B66 5G NR: N2 N5 N66 N77
Supported Private Networks	
Anterix	Anterix 4G LTE 5G Bands (AG60 Enterprise Series Antennas are Anterix 4G 5G Ready) 900MHz Band (896-901MHz / 935-940MHz) B8 B106
CBRS	CBRS 4G LTE 5G Bands (AG60 Enterprise Series Antennas are CBRS 4G 5G Ready) 3.5GHz Band (3550-3700MHz) B48
WiFi HaLow	WiFi HaLow Bands (AG60 Enterprise Series Antennas are WiFi HaLow Ready) 900MHz Band (902-928MHz) IEEE 802.11ah
LoRaWAN	LoRaWAN 4G LTE 5G Bands (AG60 Enterprise Series Antennas are LoRaWAN Ready) 915MHz Band (902-928MHz) US915
Supported WiFi IEEE Standards	
WiFi 1 - 3 - 4 WiFi HaLow	WiFi 1 (802.11b) WiFi 3 (802.11g) WiFi 4 (802.11n) WiFi HaLow (802.11ah)





AG-DP2C XPOL Series Directional Multi-Network Cellular Antenna  
XPOL Series Directional MIMO 2 x Cellular 4G LTE 5G NR / WiFi 2.4  
Private Networks: Anterix / CBRS / LoRaWAN / WiFi HaLow  
Cross Polarized / Low PIM / Multi-Network / Outside Use  
Includes: Tilt-Bracket Mount / 1ft Coax Cables - NF

AG-DP2C XPOL Series Cross Polarized Directional MIMO 2 x Cellular 4G LTE CBRS 5G NR  
Dimensions / Tilt L-Bracket Mount

Height: 12.6" / 320mm  
Width: 8.26" / 210mm  
Depth: 3.0" / 75mm

210mm  
8.26"

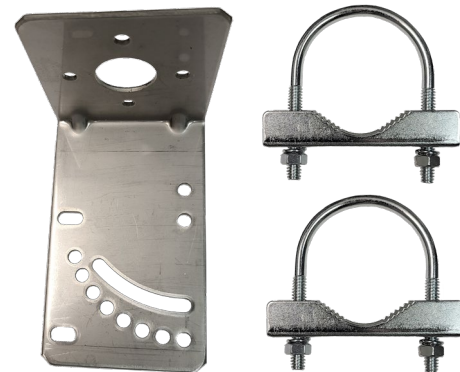
320mm  
12.6"



AG-DPC  
(Back View)



Includes Tilt L-Bracket Mount  
w/ 2 U-Bolt Sets



1ft Coax Cables  
N Female

AG-DP2C XPOL Series Directional MIMO Cellular Antenna w/ 1ft Coax Cables. Includes Tilt L-Bracket Mount Hardware  
"Built To Spec" Custom Extension Cable / Connector End Options are Available. Contact us for details.

AG-DP2C XPOL Series Cross Polarized Directional MIMO 2 x Cellular Antenna Configuration Options Tilt Bracket Mount w/ 1ft Coax Cables	
Configuration Options (Extension Cables Sold Separately)	AG-DP2C-XPOL-1-2NF: XPOL Directional MIMO 2 x Cellular 4G LTE CBRS 5G NR – N Female

SKU: AG-DP2C-XPO-1-2NF  
 MIMO 2 Lead



2 x 1ft Coax Cables  
 Extension Cables Sold Separately

2 x N Female



AGA Ultra Low-Loss Extension Coax Cables / 1ft AGA200 Coax Cables  
 (Sold Separately)

AGA240 | AGA400 Extension Coax Cables  
 N Male / SMA Male



AGA240 | AGA400 Extension Coax Cables  
 N Male / SMA Male



1ft AGA200 Coax Cables  
 N Female / QMA Male



1ft AGA200 Coax Cables  
 N Female / SMA Male



1ft AGA200 Coax Cables  
 N Female / TNC Male



1ft AGA200 Coax Cables  
 N Female / FAKRA-D





System Lightning Surge Protection Kits / Ground Kits  
 (Sold Separately)

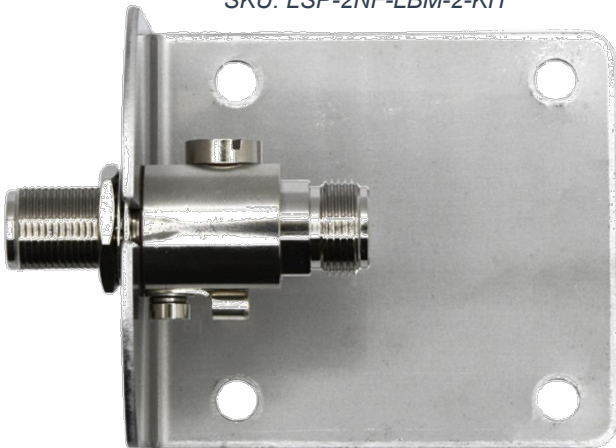
Surge Protector - NF  
 SKU: LSP-2NF



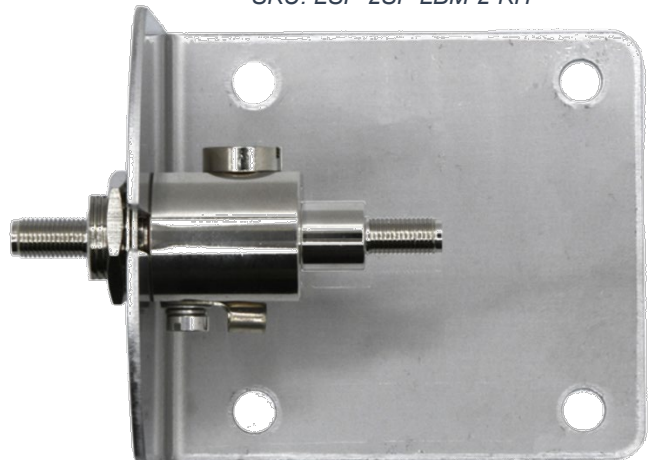
Surge Protector - SF  
 SKU: LSP-2SF



Surge Protector w/ L-Bracket Mount Kit  
 SKU: LSP-2NF-LBM-2-KIT



Surge Protector w/ L-Bracket Mount Kit  
 SKU: LSP-2SF-LBM-2-KIT



Ground Kits