



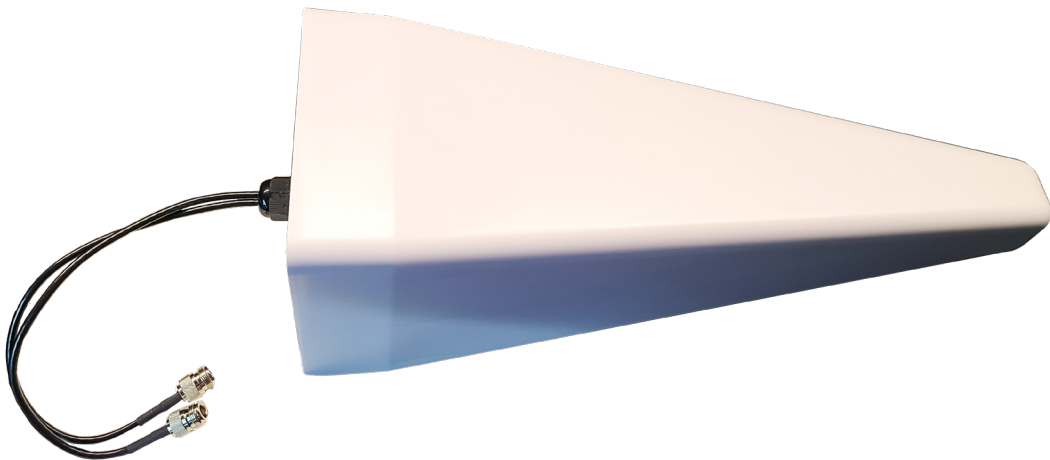
AG-YAGI XPOL Series Directional Multi-Network Cellular Antenna
XPOL Series Directional MIMO 2 x Cellular 4G LTE 5G NR / WiFi 2.4
Private Networks: Anterix / CBRS / LoRaWAN / WiFi HaLow
Cross Polarized / Low PIM / Multi-Network / Outside Use
Includes: 2 x 1ft Coax Cables / Tilt-Bracket Mount

AG-YAGI XPOL Series Cross Polarized Directional MIMO 2 x Cellular Antenna
Multi-Network Directional MIMO 2 x Cellular 4G LTE 5G NR / WiFi 2.4GHz
Private Networks: Anterix / CBRS / LoRaWAN / WiFi HaLow
Compatible with Smart Router Antenna Technology
Includes: Tilt-Bracket Mount Hardware / 1ft Coax Cables – NF
(Extension Coax Cables / Surge Protection Sold Separately)

Frequency Range: 4G LTE 5G NR Anterix / LoRaWAN / WiFi HaLow / CBRS Frequency Range: WiFi	617-960MHz / 1690-2700MHz / 3300-3800Hz 896~940MHz / 902~928MHz / 3550-3700MHz 2.4GHz
Avg Isotropic Peak Gain: 4G LTE 5G NR Anterix / LoRaWAN / WiFi HaLow / CBRS Avg Isotropic Peak Gain: WiFi 2.4GHz	7dBi / 9dBi / 12dBi 8dBi / 8dBi / 12dBi 8dBi
Horizontal Half-Power Beamwidth (°)	85° / 65° / 55°
Vertical Half-Power Beamwidth (°)	65° / 50° / 45°
Isolation (dB)	≥20dB
PIM 3rd Order (dBc) 2×43dBm	≤-133 / ≤-133 / ≤-133
VSWR	≤2.5 / ≤2.0 / ≤2.0
Dual Polarization (XPOL) Radiation Pattern	MIMO Vertical / Horizontal (±45°) Directional
Front to Back Ratio (dB)	≥15dB / ≥18dB / ≥20dB
Nominal Impedance	50Ω
Max. Power	50W
Mechanical / Environmental Specifications	
Application	Outside
Radome	UV Resistant ABS
Dimensions	Length: 19.5" / 495mm Width: 7.125" / 181mm Depth: 7.125" / 181mm
Coax Cables	2 x 1ft AGA200 Coax Cables – 2 x N Female Extension Cables Sold Separately All Standard Connector Ends Available (Including FAKRA)
Connector Types	2 x N Female
Mounting Hardware (Stainless Steel)	Includes Tilt-Bracket Mount Hardware w/ 2 x U-Bolt Sets
Mounting Mast Diameter	1.5"~2.0" / 38mm~51mm
Ingress Protection / Humidity	IP67 / 5%~95%
Wind Velocity	130 MPH
Operating Temp (°F)	-40° / +158° (°F)
Weight	5bs / 2.3kg Includes Mounting Hardware

AG-YAGI XPOL Series Directional MIMO Cellular Antenna w/ 2 x 1ft Coax Cables. Includes Tilt L-Bracket Mount Hardware
"Built To Spec" Custom Extension Cable / Connector End Options are Available. Contact us for details.

Supported Cellular Service Provider Networks	
Verizon Including MVNO's	Verizon 4G LTE 5G NR Bands 4G LTE: B2 B4 B5 B13 B46 B48 B66 5G NR: N2 N5 N13 N66 N77
T-Mobile Including MVNO's	Mobile 4G LTE 5G NR Bands 4G LTE: B2 B4 B5 B12 B41 B66 B71 5G NR: N2 N25 N41 N71
AT&T Including MVNO's	AT&T 4G LTE 5G NR Bands 4G LTE: B2 B4 B5 B12 B14 B17 B29 B30 B48 B66 5G NR: N2 N5 N66 N77
Supported Private Networks	
Anterix	Anterix 4G LTE 5G Bands (AG60 Enterprise Series Antennas are Anterix 4G 5G Ready) 900MHz Band (896-901MHz / 935-940MHz) B8 B106
CBRS	CBRS 4G LTE 5G Bands (AG60 Enterprise Series Antennas are CBRS 4G 5G Ready) 3.5GHz Band (3550-3700MHz) B48
WiFi HaLow	WiFi HaLow Bands (AG60 Enterprise Series Antennas are WiFi HaLow Ready) 900MHz Band (902-928MHz) IEEE 802.11ah
LoRaWAN	LoRaWAN 4G LTE 5G Bands (AG60 Enterprise Series Antennas are LoRaWAN Ready) 915MHz Band (902-928MHz) US915
Supported WiFi IEEE Standards	
WiFi 1 - 3 - 4 WiFi HaLow	WiFi 1 (802.11b) WiFi 3 (802.11g) WiFi 4 (802.11n) WiFi HaLow (802.11ah)





AG-YAGI XPOL Series Directional Multi-Network Cellular Antenna
XPOL Series Directional MIMO 2 x Cellular 4G LTE 5G NR / WiFi 2.4
Private Networks: Anterix / CBRS / LoRaWAN / WiFi HaLow
Cross Polarized / Low PIM / Multi-Network / Outside Use
Includes: 2 x 1ft Coax Cables / Tilt-Bracket Mount

AG-YAGI XPOL Series MIMO Directional Cellular 4G LTE 5G NR / Anterix CBRS LoRaWAN WiFi-HaLow
Dimensions / Tilt L-Bracket Mount

SKU: AG-YM-XPOL-NF

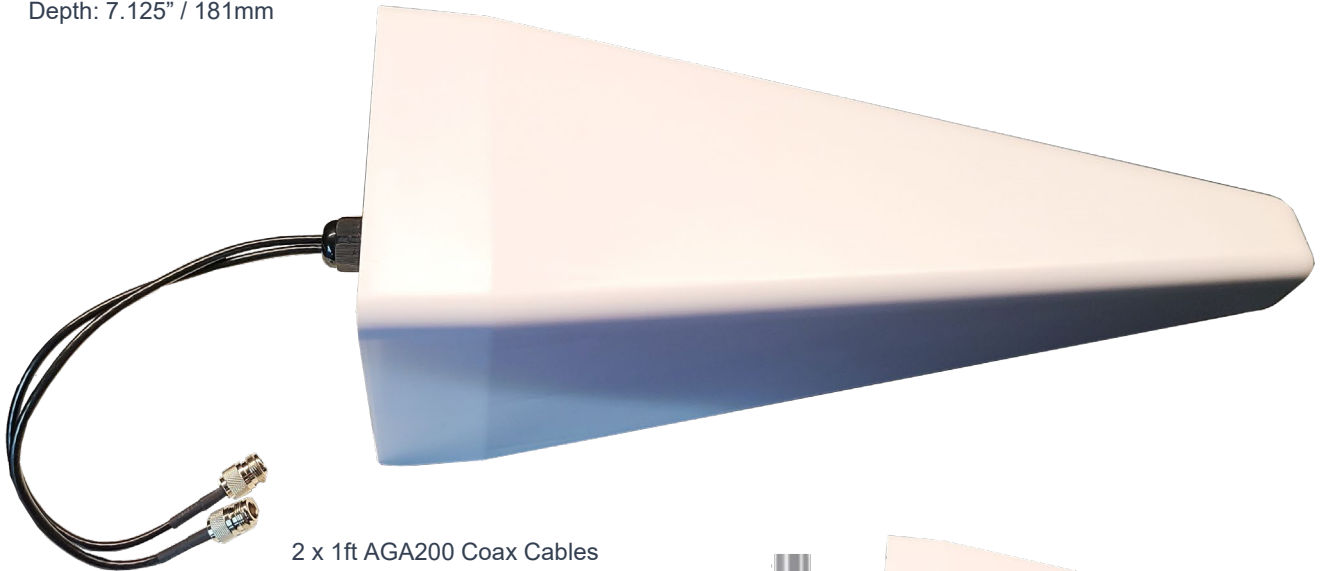
Dimensions

Length: 19.5" / 495mm

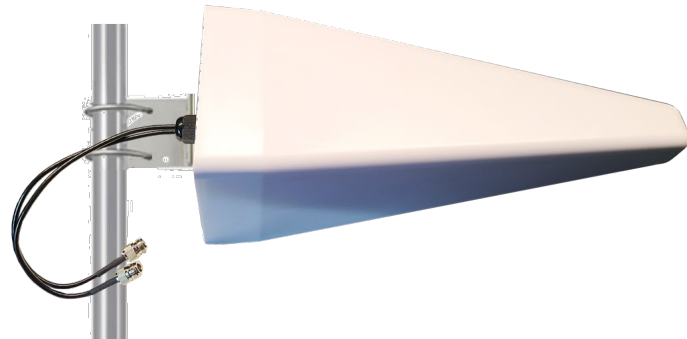
Width: 7.125" / 181mm

Depth: 7.125" / 181mm

19.5" / 495mm

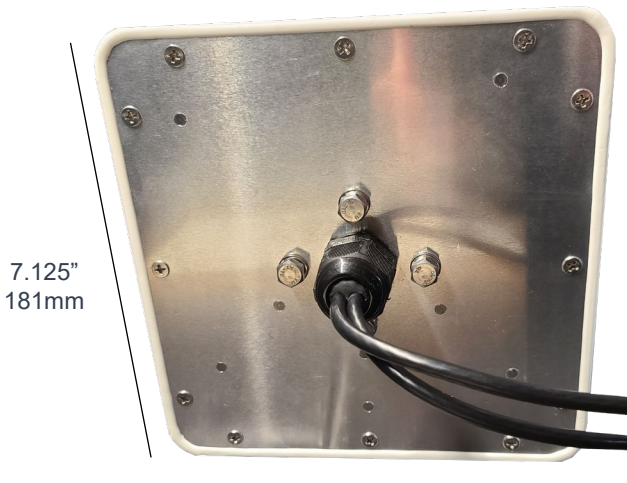


2 x 1ft AGA200 Coax Cables
2 x N Female



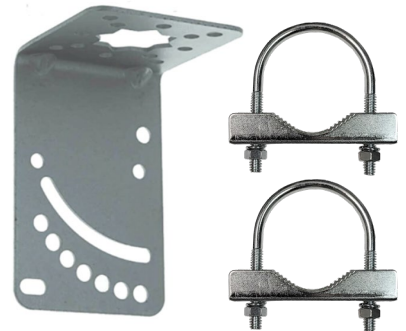
Mounting Pole
Not Included

Back View



7.125"
181mm

7.125" / 181mm



Includes: Tilt L-Bracket Mount
w/2 U-Bolt Sets

AG-YAGI XPOL Series Directional MIMO Cellular Antenna w/ 2 x 1ft Coax Cables. Includes Tilt L-Bracket Mount Hardware
"Built To Spec" Custom Extension Cable / Connector End Options are Available. Contact us for details.

*AGA Ultra Low-Loss Extension Coax Cables
 (Sold Separately)*

*Finished AGA195 | AGA240 | AGA400 Extension Coax Cables (Lengths: 15ft - 100ft) - N Male
 Extension Cable Options: N Male / SMA Male | N Male / QMA Male | N Male / TNC Male | N Male / FAKRA-D*



N Male

SMA Male



QMA Male



TNC Male



FAKRA-D



AGA Ultra Low-Loss Extension Coax Cables / 1ft AGA200 Adapter Cables
 (Sold Separately)

Finished AGA195 | AGA240 | AGA400 Extension Coax Cables (Lengths: 15ft - 100ft) – N Male / N Male
 Adapter Cable Options: N Female / SMA Male | N Female / QMA Male | N Female / TNC Male | N Female / FAKRA-D



N Male

N Male

SKU: AGA200-1-NF-SM

SKU: AGA200-1-NF-QM

1ft AGA200 Adapter Cable
 N Female / SMA Male

1ft AGA200 Adapter Cable
 N Female / QMA Male

N Female 1ft AGA200 Coax Adapter Cables
 SMA Male | QMA Male | TNC Male | FAKRA-D

SKU: AGA200-1-NF-TM

SKU: AGA200-1-NF-FAKRA-D

1ft AGA200 Adapter Cable
 N Female / TNC Male

1ft AGA200 Adapter Cable
 N Female / FAKRA-D

System Lightning Surge Protection Kits / Ground Kits / J-Pipe Mount
 (Sold Separately)

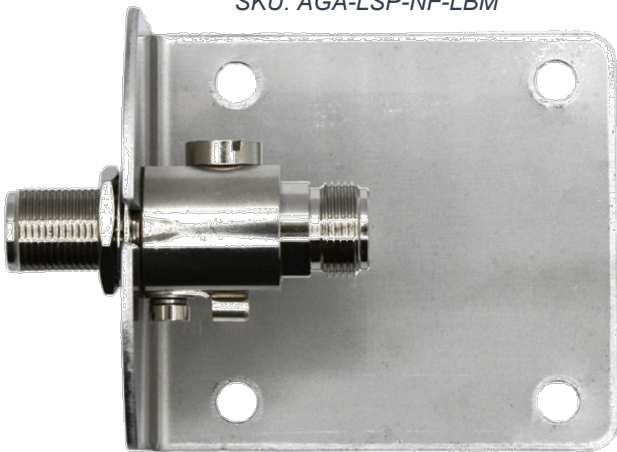
Surge Protector - NF
 SKU: AGA-LSP-AXP-NF



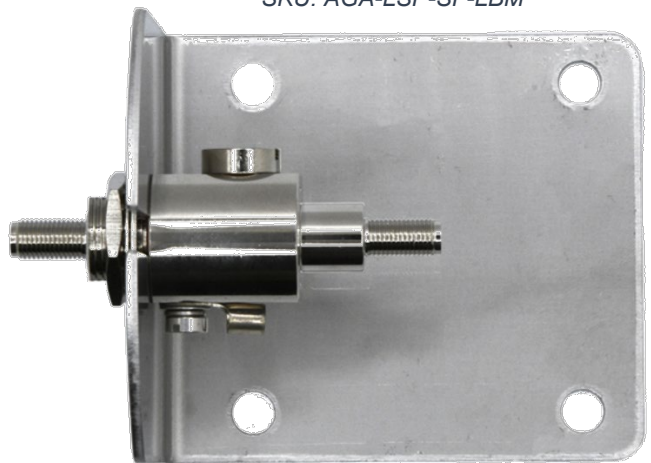
Surge Protector - SF
 SKU: AGA-LSP-AXP-SF



Surge Protector w/ L-Bracket Mount Kit
 SKU: AGA-LSP-NF-LBM



Surge Protector w/ L-Bracket Mount Kit
 SKU: AGA-LSP-SF-LBM



Ground Kit
 SKU: AGA-GND-KIT-20



Adjustable J-Pipe Mount
 SKU: AGA-JPIPE-M

