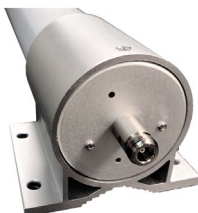


AG25 Omni Cellular / WiFi Series M2M IoT Antenna Specifications
Multi-Network Omni-Directional Cellular 4G LTE 5G NR / WiFi 6
Private Networks: Anterix / CBRS / LoRaWAN / WiFi HaLow / Wi-SUN
Includes Mounting Hardware / Extension Coax Cables Available

Frequency Range: 4G LTE 5G NR Anterix LoRaWAN WiFi-HaLow CBRS Wi-SUN WiFi 6	617~960MHz / 1710~6000MHz 896~940MHz / 902~928MHz / 3550~3700MHz 2.4GHz ~ 6GHz
Avg Peak Gain Isotropic: 4G LTE 5G NR Anterix LoRaWAN WiFi-HaLow CBRS Wi-SUN WiFi 6	(7dBi) 617~960MHz / (9dBi) 1710~3800MHz / (9dBi) 4900~6000MHz (7dBi) 896~940MHz / (7dBi) 902~928MHz / (9dBi) 3550~3700MHz (7dBi) 2.4GHz / (8dBi) 5GHz
Typical Efficiency - Element	617-960MHz >50% 1710-3800MHz >50% 4900-6000MHz >55%
Isolation - Element	>10dB
Correlation Co-efficient - Element	<0.2
Horizontal Half Power Beamwidth	360° / 360°
Vertical Half Power Beamwidth	40° / 20°
VSWR	≤2.0 / ≤2.0
Nominal Impedance	50Ω
Polarization	Vertical Omni Directional
Max. Power	50W
Mechanical / Environmental Specifications	
Radome	High Impact Polycarbonate Height: 22" / 560mm - Diameter: 3" / 78mm
Connector Types	N Female
Coax Cables	Sold Separately Standard and Custom Cable Length Options are Available All Standard Connector Ends Available
Mounting Hardware (Stainless Steel)	Includes Mounting Hardware Bracket Mount + 2 x U-Bolt Sets
Mounting Mast Diameter	2"~3.5" / 50mm~90mm
Ingress Protection	IP69K
Wind Velocity	140 MPH
Operating Temp (°F)	-40° / +158° (°F)
Weight	2.2lbs / 1.1kg

Multi-Network Cellular / WiFi Configuration Options - NF

Cellular	Cellular 4G LTE 5G NR C-Band
WiFi	WiFi Band 1-6



Supported Cellular Service Provider Networks

Verizon Including MVNO's	Verizon 4G LTE 5G NR Bands 4G LTE: B2 B4 B5 B13 B46 B48 B66 5G NR: N2 N5 N13 N66 N77 N79 (C-Band)
T-Mobile Including MVNO's	Mobile 4G LTE 5G NR Bands 4G LTE: B2 B4 B5 B12 B41 B66 B71 5G NR: N2 N25 N41 N71 N79 (C-Band)
AT&T Including MVNO's	AT&T 4G LTE 5G NR Bands 4G LTE: B2 B4 B5 B12 B14 B17 B29 B30 B48 B66 5G NR: N2 N5 N66 N77 N79 (C-Band)

Supported Private Networks

Anterix	Anterix 4G LTE 5G Bands (AG Antennas are Anterix 4G 5G Ready) 900MHz Band (896-901MHz / 935-940MHz) B8 B106
CBRS	CBRS 4G LTE 5G Bands (AG Antennas are CBRS 4G 5G Ready) 3.5GHz Band (3550-3700MHz) B48
WiFi HaLow	WiFi HaLow Bands (AG Antennas are WiFi HaLow Ready) 900MHz Band (902-928MHz) IEEE 802.11ah
LoRaWAN	LoRaWAN 4G LTE 5G Bands (AG Antennas are LoRaWAN Ready) 915MHz Band (902-928MHz) US915
Wi-SUN	Wi-SUN 4G LTE 5G Bands (AG Antennas are Wi-SUN Ready) 915MHz Band (902-928MHz) IEEE 802.15.4g

Supported WiFi IEEE Standards

WiFi 1-6	WiFi 1 WiF 2 (802.11ba) WiFi 3 (802.11g) WiFi 4 (802.11n) WiFi 5 (802.11ac) WiiiFi 6 6E (802.11ax)
WiFi HaLow Wi-SUN	WiFi HaLow (802.11ah) Wi-SUN (802.15.4g)

AG25 Omni Series Antenna
Dimensions / Mounting Bracket

78mm / 3"

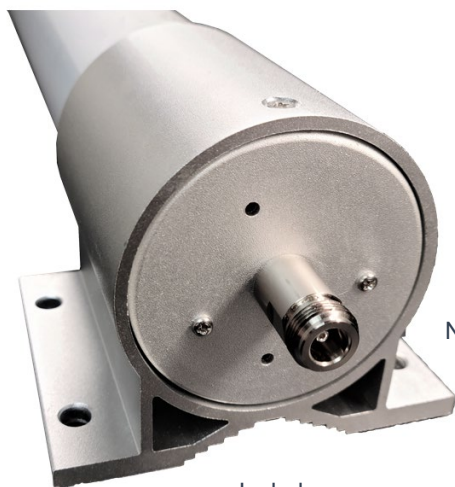
SKU: AG25-NF



560mm
22"



Mounting Pole
Not Included



N Female

Includes
Mounting Bracket

Includes
2 x U-Bolt Sets



*AGA Ultra Low-Loss Extension Coax Cables
(Sold Separately)*

*Finished AGA195 | AGA240 | AGA400 Extension Coax Cables (Lengths: 15ft - 100ft)
Extension Coax Cable Connector End Options: SMA | TNC | FAKRA | QMA | N Type*



N Male

N Male

SMA Male



WiFi: RP SMA Male



WiFi: SMA Male



TNC Male



WiFi: TNC Male



WiFi: RP TNC Male



FAKRA-D



FAKRA-I



QMA Male



WiFi N-Male



AG25 Cellular Omni Series Antenna – N Female Adapter Cables
Finished Coax Cables w/ AG25 Adapter Cable Options

Finished AGA195 | AGA240 | AGA400 Extension Coax Cables (Lengths: 15ft - 100ft) – N Male / N Male
N Female 1ft Adapter Cable Options: SMA | TNC | QMA | FAKRA | N Type



System Lightning Surge Protection Kits / Ground Kits / J-Pipe Mount
(Sold Separately)

Surge Protector - NF
SKU: AGA-LSP-AXP-NF



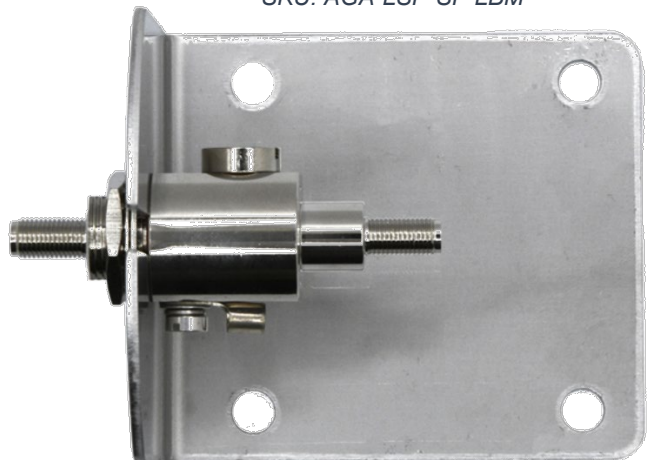
Surge Protector - SF
SKU: AGA-LSP-AXP-SF



Surge Protector w/ L-Bracket Mount Kit
SKU: AGA-LSP-NF-LBM



Surge Protector w/ L-Bracket Mount Kit
SKU: AGA-LSP-SF-LBM



Ground Kit
SKU: AGA-GND-KIT-20



Adjustable J-Pipe Mount
SKU: AGA-JPIPE-M

